

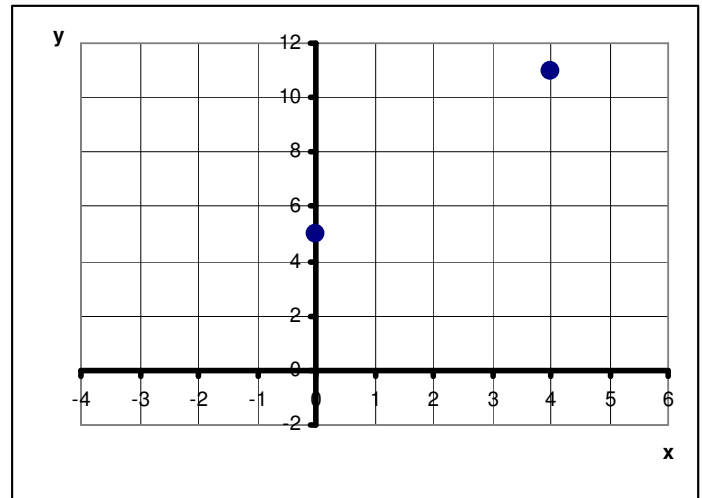
## Slope and Y-Intercept of the Graph of a Line

1. Consider a line that passes through the two points (0, 5) and (4, 11).

Now look at the data table and graph below.

- Sketch in the line that passes through the two given points.
- Identify the y-intercept of the line.
- Show how to determine the slope of the line.
- Write an equation for the line.
- Show how to find the value of  $y$  when  $x = 3$ .

$\Delta x$	$x$	$y$	$\Delta y$
	0	5	
	4	11	



2. Suppose a line has slope -2 and y-intercept 10.

- Write an equation for the line.
- Complete the table and graph below.

$x$	$y$
-1	
0	
1	
2	
3	
4	
5	
6	

