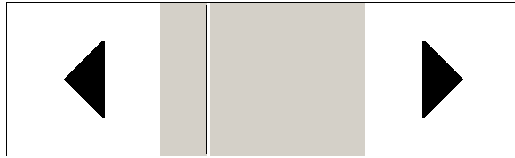
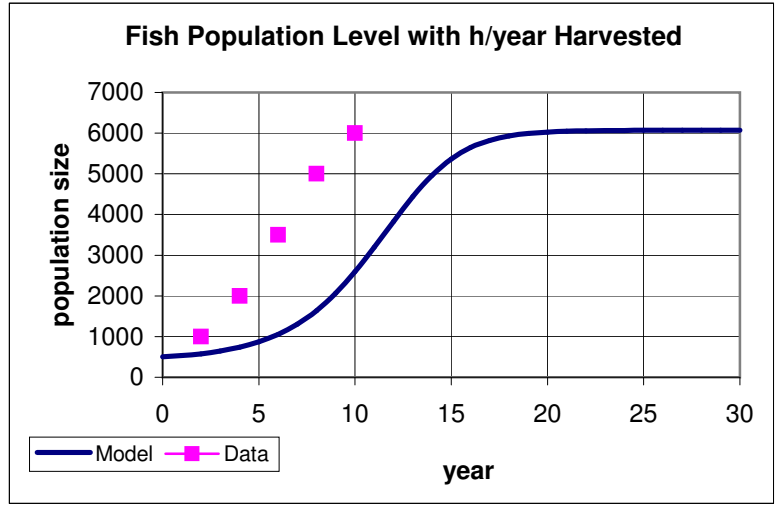


$p(0) = 500$
 $k = 0.00008$
 $L = 6500$
 $h = 208$
 $p = 0$

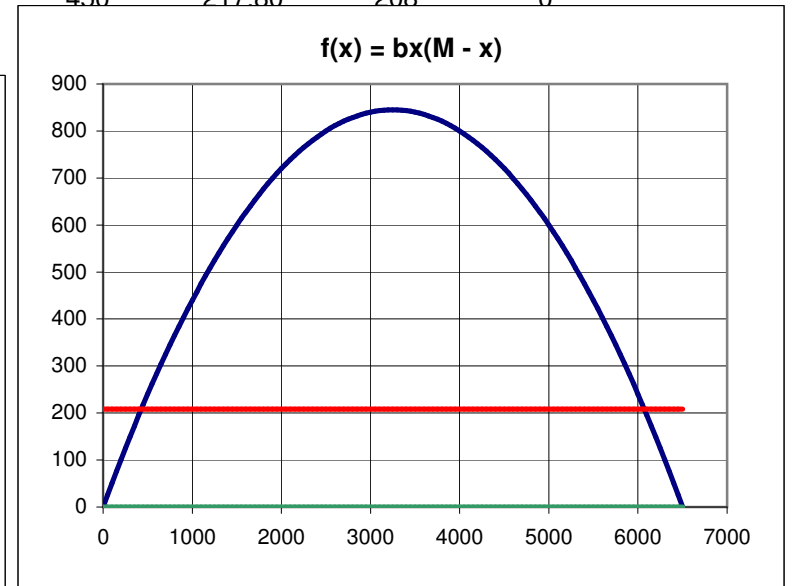
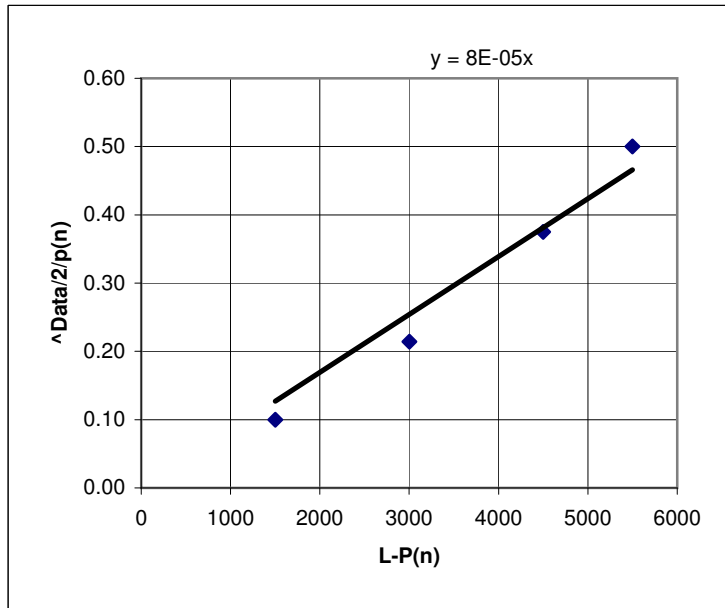


n	Data	p(n)	$\Delta\text{Data}/2$	$\Delta\text{Data}/2/P(n)$	L-P(n)	$\frac{\Delta\text{Data}^2/P(n)}{L-P(n)}$
0		500				
1		532				
2	1000	578				
3		644				
4	2000	737	500	0.50	5500	0.000091
5		869				
6	3500	1053	750	0.38	4500	0.000083
7		1304				
8	5000	1638	750	0.21	3000	0.000071
9		2067				
10	6000	2592	500	0.10	1500	0.000067



400	195.20	208	0
450	217.80	208	0

11 3195
 12 3831
 13 4441
 14 4965
 15 5366
 16 5645
 17 5823
 18 5930
 19 5993
 20 6028
 21 6048
 22 6058
 23 6064
 24 6068
 25 6070
 26 6071
 27 6071
 28 6071
 29 6072
 30 6072
 31 6072
 32 6072
 33 6072
 34 6072



1350	536.20	208	0
1400	571.20	208	0
1450	585.80	208	0
1500	600.00	208	0
1550	613.80	208	0
1600	627.20	208	0
1650	640.20	208	0
1700	652.80	208	0

35	6072	1750	665.00	208	0
36	6072	1800	676.80	208	0
37	6072	1850	688.20	208	0
38	6072	1900	699.20	208	0
39	6072	1950	709.80	208	0
40	6072	2000	720.00	208	0
		2050	729.80	208	0
		2100	739.20	208	0
		2150	748.20	208	0
		2200	756.80	208	0
		2250	765.00	208	0
		2300	772.80	208	0
		2350	780.20	208	0
		2400	787.20	208	0
		2450	793.80	208	0
		2500	800.00	208	0
		2550	805.80	208	0
		2600	811.20	208	0
		2650	816.20	208	0
		2700	820.80	208	0
		2750	825.00	208	0
		2800	828.80	208	0
		2850	832.20	208	0
		2900	835.20	208	0
		2950	837.80	208	0
		3000	840.00	208	0
		3050	841.80	208	0
		3100	843.20	208	0
		3150	844.20	208	0
		3200	844.80	208	0
		3250	845.00	208	0
		3300	844.80	208	0
		3350	844.20	208	0
		3400	843.20	208	0
		3450	841.80	208	0
		3500	840.00	208	0
		3550	837.80	208	0
		3600	835.20	208	0
		3650	832.20	208	0
		3700	828.80	208	0
		3750	825.00	208	0
		3800	820.80	208	0
		3850	816.20	208	0

3900	811.20	208	0
3950	805.80	208	0
4000	800.00	208	0
4050	793.80	208	0
4100	787.20	208	0
4150	780.20	208	0
4200	772.80	208	0
4250	765.00	208	0
4300	756.80	208	0
4350	748.20	208	0
4400	739.20	208	0
4450	729.80	208	0
4500	720.00	208	0
4550	709.80	208	0
4600	699.20	208	0
4650	688.20	208	0
4700	676.80	208	0
4750	665.00	208	0
4800	652.80	208	0
4850	640.20	208	0
4900	627.20	208	0
4950	613.80	208	0
5000	600.00	208	0
5050	585.80	208	0
5100	571.20	208	0
5150	556.20	208	0
5200	540.80	208	0
5250	525.00	208	0
5300	508.80	208	0
5350	492.20	208	0
5400	475.20	208	0
5450	457.80	208	0
5500	440.00	208	0
5550	421.80	208	0
5600	403.20	208	0
5650	384.20	208	0
5700	364.80	208	0
5750	345.00	208	0
5800	324.80	208	0
5850	304.20	208	0
5900	283.20	208	0
5950	261.80	208	0
6000	240.00	208	0

6050	217.80	208	0
6100	195.20	208	0
6150	172.20	208	0
6200	148.80	208	0
6250	125.00	208	0
6300	100.80	208	0
6350	76.20	208	0
6400	51.20	208	0
6450	25.80	208	0
6500	0.00	208	0
6550	-26.20		
6600	-52.80		
6650	-79.80		
6700	-107.20		
6750	-135.00		
6800	-163.20		
6850	-191.80		
6900	-220.80		
6950	-250.20		
7000	-280.00		