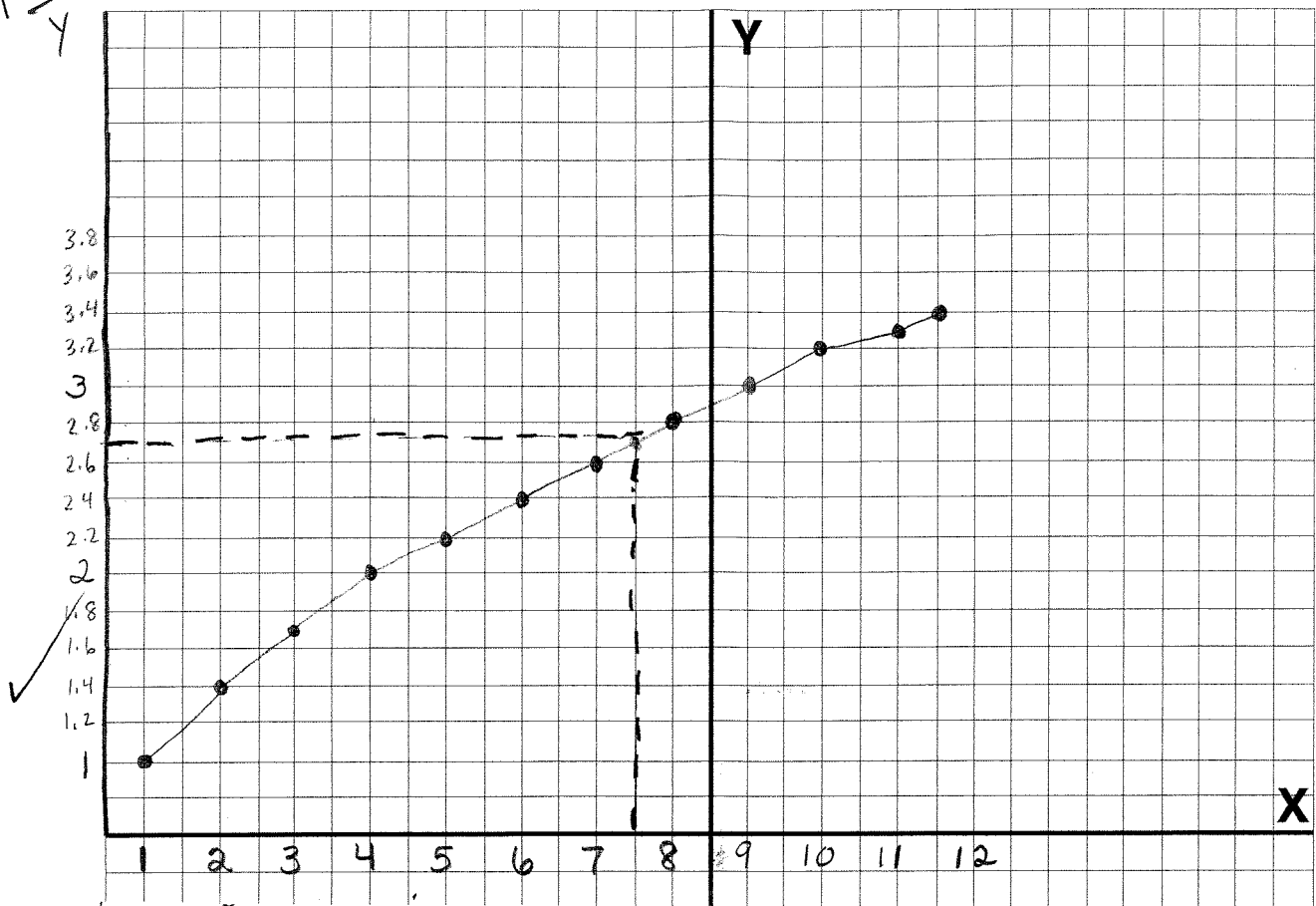


$$\begin{array}{r} 6.4 \\ \sqrt{42} \\ \hline \end{array}$$

Rectangular Coordinate System



On the rectangle grid I graphed the square roots of the numbers on the X axes

I connected the points together. I can approximate that $\sqrt{7.5}$ would be ≈ 2.7

This graph can approximate the square roots of numbers greater than 1 and less than 12