

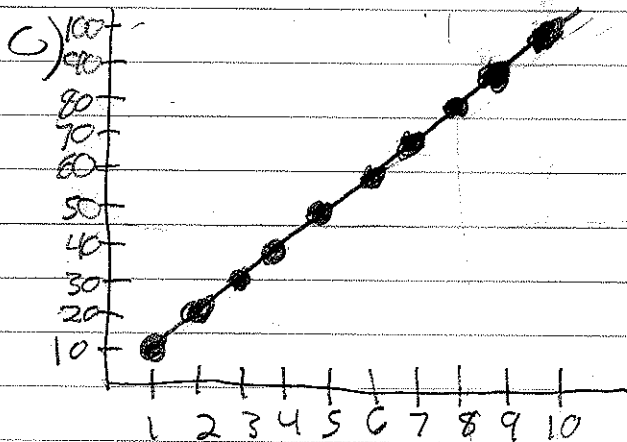
Section 2.2

4) A rule for assigning a value for the range would be to multiply the number in the domain by 10 to find its corresponding range value.

a) $g(x) = x \cdot 10$

b)

x	1	2	3	4	5	6	7	8	9	10
g(x)	10	20	30	40	50	60	70	80	90	100



(2) a) $\text{slope} = \frac{\text{rise}}{\text{run}} = \frac{2}{1} = 2$

Y-intercept = 2

equation $\Rightarrow y = 2x + 2$

b) $\text{slope} = \frac{\text{rise}}{\text{run}} = \frac{3}{-1} = -3$

Y-intercept = 0

equation $\Rightarrow y = -3x$