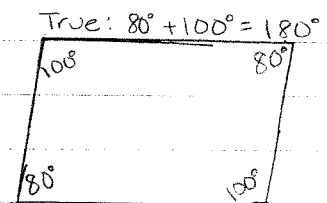
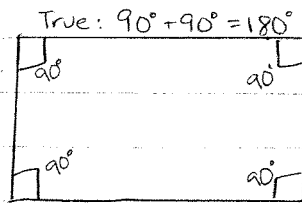
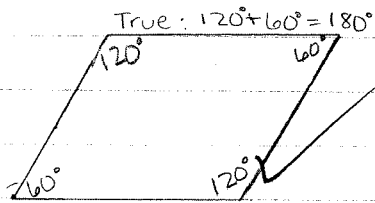


9.1/24 b.e. Note the use of "several" examples in each case.

[B]: "Any two angles in a parallelogram that share a common side are supplementary."

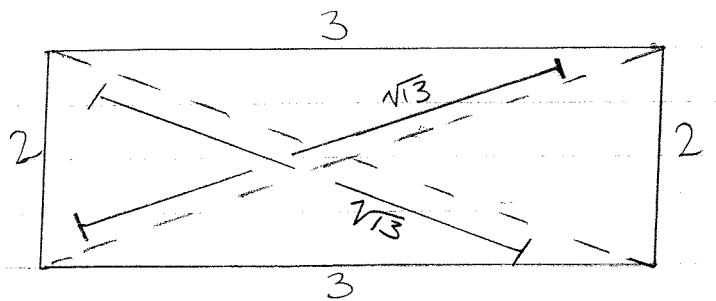
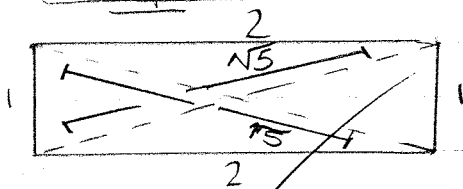
-Examples:



-Answer: The answer is true, any two angles in a parallelogram that share a common side are supplementary, meaning that any two angles on the same side will add up to equal 180°.
 the measures of →

[C]: "The two diagonals of a rectangle have the same length."

-Examples:



-Answer: The answer is true, the two diagonals of a rectangle have the same length. This is true no matter what the size of the rectangle is.
 is